

# Garden

People. Forms. Swisspearl.

**SWISS**  
**pearl®**



Heinrich Heine

On a radiant summer morning  
I walk around in the garden.  
The flowers whisper and speak,  
But I wander silently.



04 – 25

## Soft Line

06	Aladin	14	Plantship
07	Alto	15	Samurai
07	Biasca	16	Maia
08	Bonsai	17	Ronco
09	Delta	18	Sessanta
10	Geisha	19	Spindel
11	Kyoto	20	Sumo
12	Kolonna	21	Sushi
13	Lausanne	22	Tokyo
13	Osaka	23	Trenta
14	Quadra	24	Twista
		25	Wave

26 – 31

## Urban Gardening

28	Balconia	30	Ondagreen
29	Delta 25	31	Das Hochbeet

32 – 38

## Custom Line

39 – 46

## Extras

39	Custom Color	42	The Material
39	Expression Line	44	Gardening Tips
40	Natural Colors	46	Production



# SOFT LINE

A mere glance at the clear  
lines furnishes an insight  
into the quintessential.

SOFT LINE

## Soft Line.

**Unique objects for the garden living area.**

Multifaceted aesthetics and practical functionality mean that Swisspearl plant containers offer an equally powerful impact, whether as a single object, or a perfectly coordinated ensemble. Leading designers have created freedom for an individual plant world and thus the exquisite configuration of our surroundings.

SOFT LINE



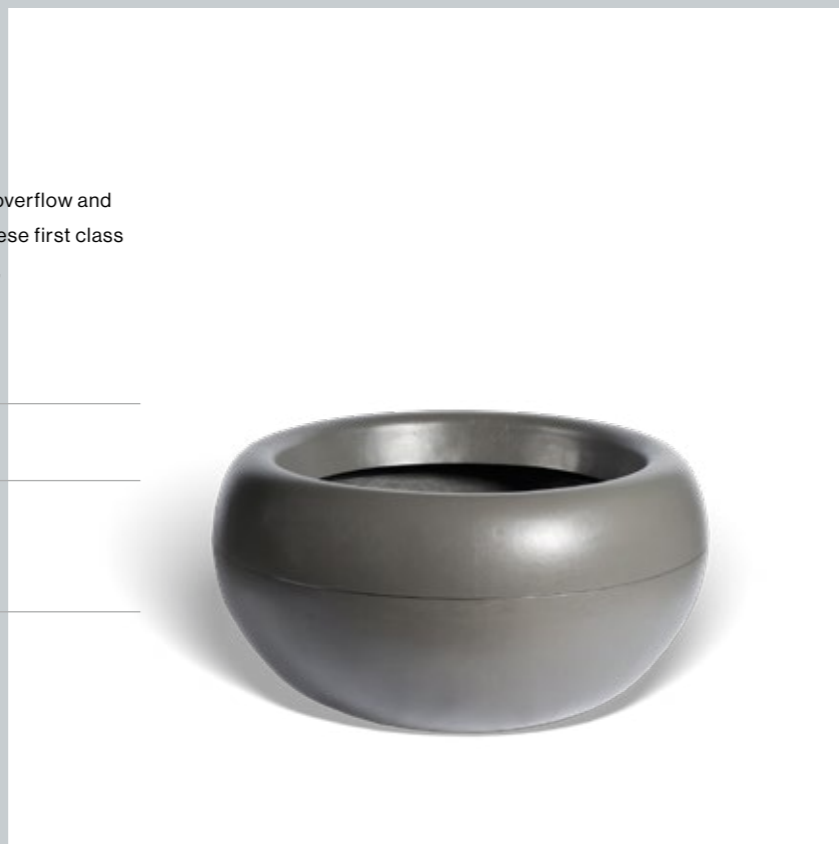
SOFT LINE

## SOFTLINE | **ALADIN**

An ideal curvature fitted with a water overflow and reservoir, and entirely coated. With these first class features, the designer, Patrick Schöni, has placed an emphasis on durability.

### Dimensions per element

Ø 112 x H 59 cm  
Ø 138 x H 73 cm  
Ø 165 x H 87 cm



## SOFTLINE | **ALTO**

Timeless beauty, functionality and weather-resistant outdoor design as a focal point of garden composition. Tailored for an expression of stylishness and individuality by Michel Bruggmann.

### Dimensions per element

Ø 39/26 x H 55 cm  
Ø 42/26 x H 65 cm  
Ø 45/26 x H 75 cm



SOFT LINE

## SOFTLINE | **BIASCA**

Garden and object design from Willy Guhl, which in Switzerland is fondly called an "elephant's ear". In this container, cacti, succulents and colourful diversity exude a special flair.

### Dimensions per element

93 x 93 x H 32 cm

SOFTLINE | **BONSAI**

„To plant a garden is to believe in tomorrow (Audrey Hepburn).“ Bonsai brings stylish, optical variety to both house and garden.

Dimensions per element

Ø 112 x H 40 cm

Ø 138 x H 50 cm

Ø 165 x H 60 cm



SOFTLINE | **DELTA**

Rectangular. Square. Round. Delta comes in numerous shapes and sizes that match every individual situation.

Dimensions per element

80 x 30 x 35 cm **DELTA 35**

100 x 30 x 35 cm

45 x 45 x 45 cm **DELTA 45**

60 x 60 x 45 cm

80 x 80 x 45 cm

100 x 100 x 45 cm

Ø 50 x H 45 cm

Ø 75 x H 45 cm

Ø 100 x H 45 cm

60 x 45 x 45 cm

80 x 45 x 45 cm

100 x 45 x 45 cm

120 x 45 x 45 cm

140 x 45 x 45 cm

80 x 55 x 60 cm **DELTA 60**

100 x 55 x 60 cm

120 x 55 x 60 cm

140 x 55 x 60 cm

60 x 60 x 60 cm

80 x 80 x 60 cm

100 x 100 x 60 cm

Ø 75 x H 60 cm



SOFTLINE | **GEISHA**

Character, charisma and relived recollections.  
Geisha means the awakening of garden chic  
by dreams.

Dimensions per element

Ø 44 x H 65 cm



Kyoto / Design: Michel Bruggmann

SOFTLINE | **KYOTO**

Inspired objects create colourful, animated  
images. Kyoto in an arrangement for  
genuine harmony.

Dimensions per element

- Ø 35 x H 36 cm
- Ø 44 x H 45 cm
- Ø 53 x H 55 cm
- Ø 70 x H 54 cm
- Ø 90 x H 70 cm
- Ø 120 x H 90 cm

**KYOTO**



- Ø 44 x H 36 cm
- Ø 53 x H 40 cm
- Ø 70 x H 45 cm
- Ø 90 x H 50 cm
- Ø 120 x H 65 cm

**KYOTO LOW**



SOFTLINE | **KOLONNA**

Simple elegance, inspired by classical antiquity, results in a classic of tomorrow. The rectilinear design permits a wealth of combinations.

Dimensions per element

- Ø 60 x H 50 cm
- Ø 60 x H 60 cm
- Ø 80 x H 70 cm



SOFTLINE | **LAUSANNE**

Elemental and durable. Like all fibre cement objects from Swisspearl. With Lausanne, immersion in an enchanted garden world becomes reality.

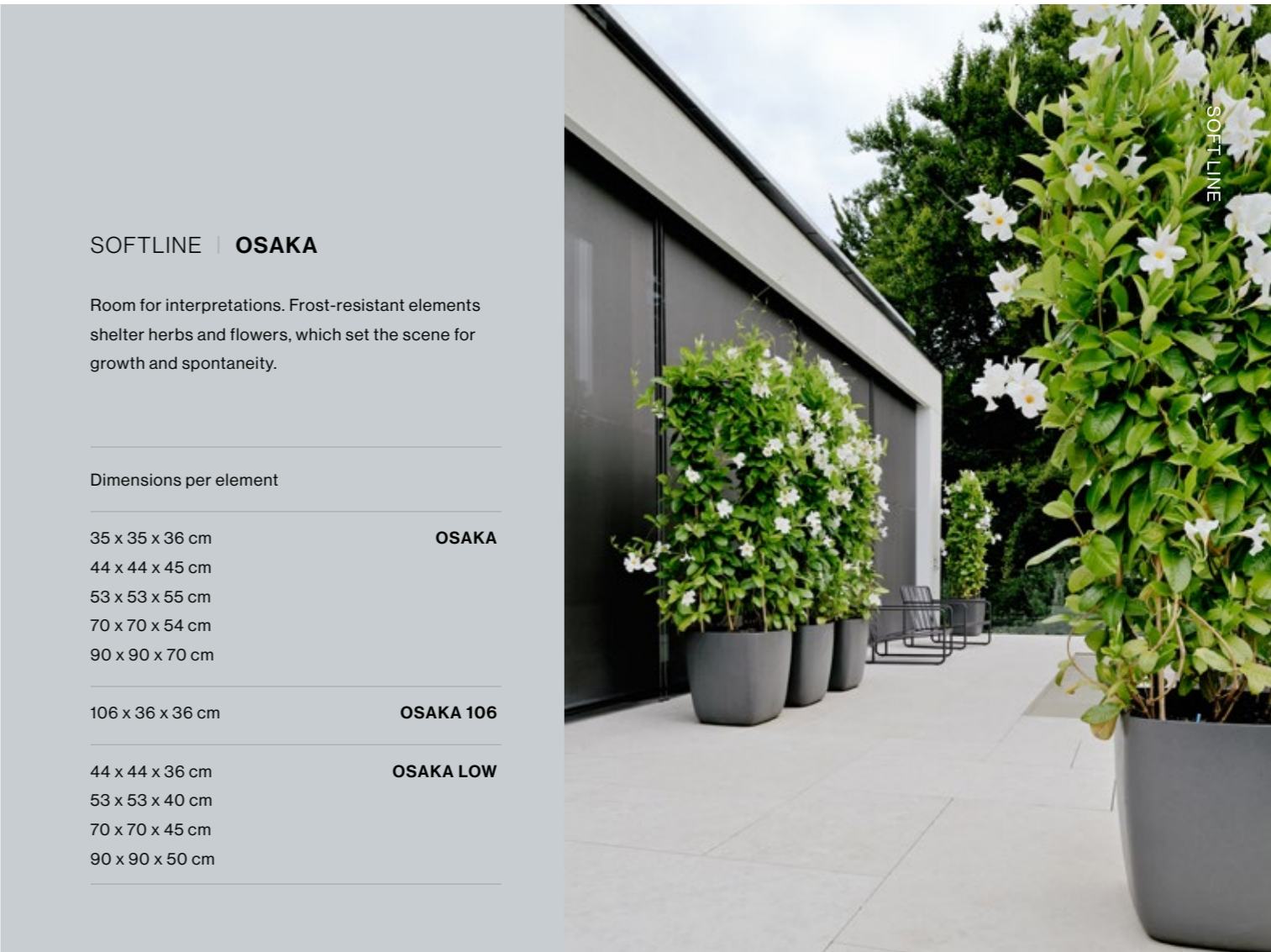
Dimensions per element

- Ø 70 x H 23 cm
- Ø 90 x H 30 cm



SOFT LINE

award: Good Design Award 2019



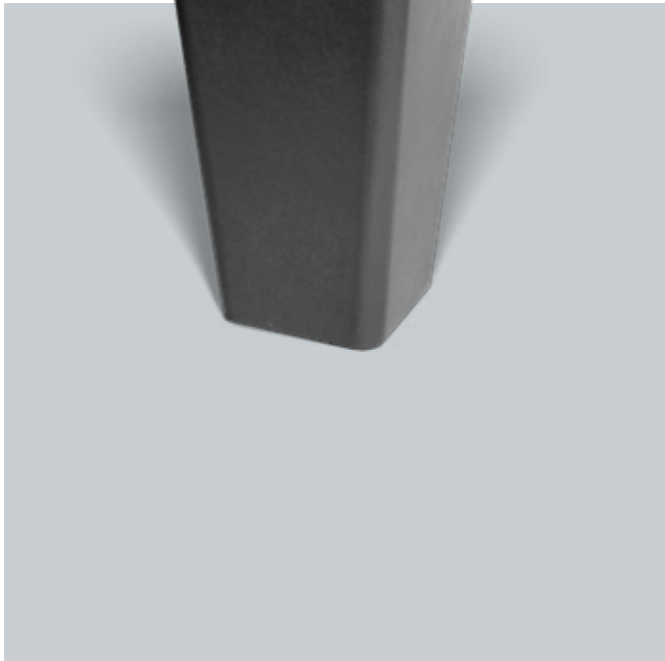
SOFT LINE

SOFTLINE | **OSAKA**

Room for interpretations. Frost-resistant elements shelter herbs and flowers, which set the scene for growth and spontaneity.

Dimensions per element

- |                  |                  |
|------------------|------------------|
| 35 x 35 x 36 cm  | <b>OSAKA</b>     |
| 44 x 44 x 45 cm  |                  |
| 53 x 53 x 55 cm  |                  |
| 70 x 70 x 54 cm  |                  |
| 90 x 90 x 70 cm  |                  |
| 106 x 36 x 36 cm | <b>OSAKA 106</b> |
| 44 x 44 x 36 cm  | <b>OSAKA LOW</b> |
| 53 x 53 x 40 cm  |                  |
| 70 x 70 x 45 cm  |                  |
| 90 x 90 x 50 cm  |                  |



SOFTLINE | **QUADRA**

Higher and higher. Quadra is perfect for large plants and ivy vines, which en route to the sun soak up a great deal of energy.

Dimensions per element

- 34 x 34 x 55 cm
- 36 x 36 x 65 cm
- 38 x 38 x 75 cm

SOFTLINE | **PLANTSHIP**

Plantship's name reflects its nautical heredity. The form is reminiscent of a boat and offers nearly as much space for a diversity of plant species.

Dimensions per element

- 142 x 40 x 40/32 cm



SOFTLINE | **SAMURAI**

Not a sword, but nonetheless capable of lending its surroundings a cutting edge. Looks delightful when planted...

Dimensions per element

- 44 x 44 x 65 cm



SOFTLINE | **MAIA**

Maia dances out of line. The slightly wavy, playful surface creates a contrast to our other planters with smooth surfaces.

Dimensions per element

Ø 59 x H 50 cm



SOFTLINE | **RONCO**

Novel and splendid. When the sun sends down its first spring rays from above, the path to fresh impulses opens.

Dimensions per element

Ø 57,2 x H 44 cm (small)

Ø 70,2 x H 54 cm (large)

Ø 142,9 x H 110 cm (x-tra on request)



SOFTLINE | **SESSANTA-6**

Slim and versatile. Sessanta-6 lends gardens and terraces the necessary flexibility and vistas, while gently delineating certain areas and looking delightful.

Dimensions per element

66 x 33 x H 66 cm



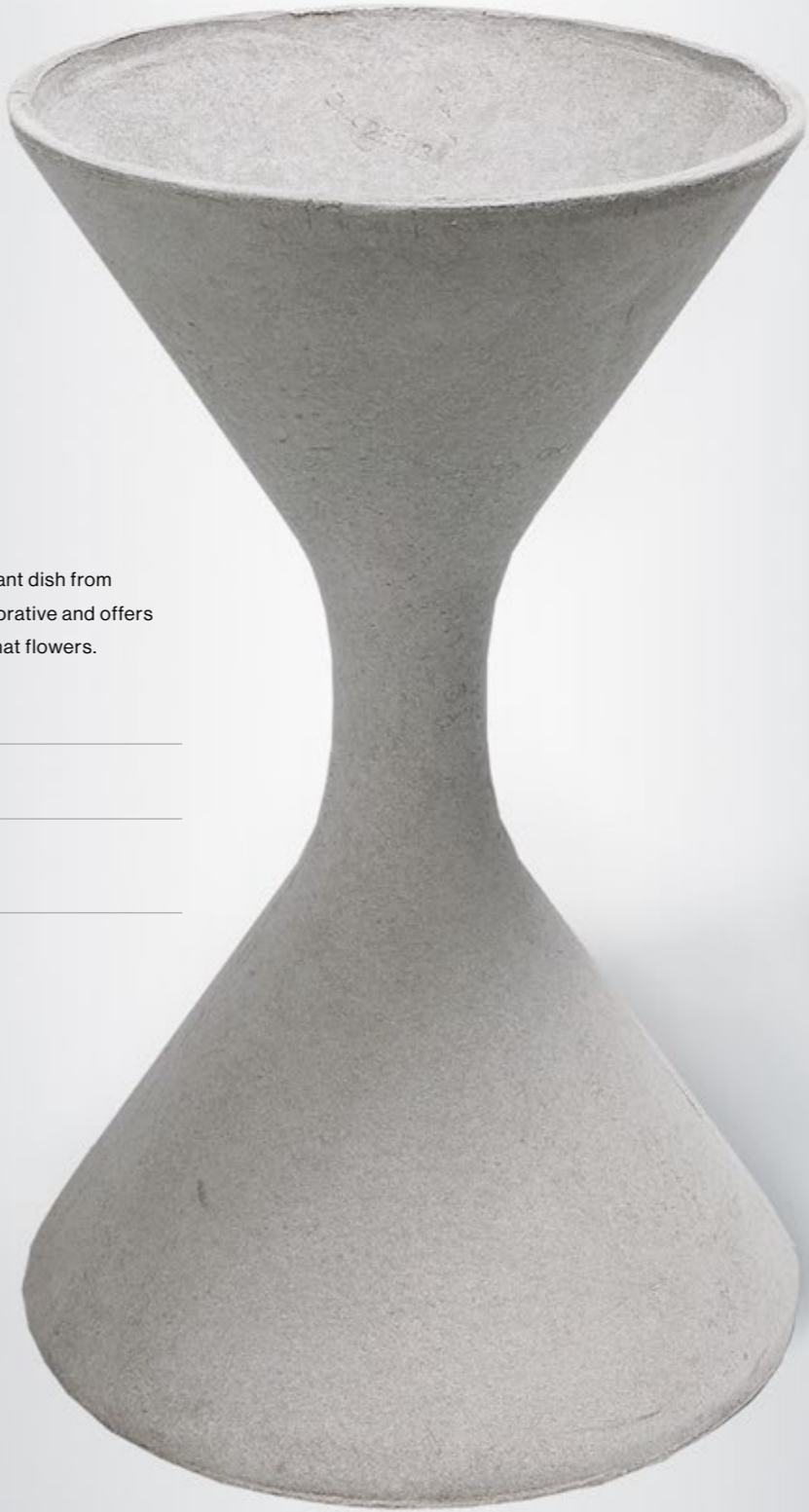
SOFTLINE | **SPINDEL**

Extravagant and shapely. This plant dish from designer Willy Guhl is highly decorative and offers adequate space for everything that flowers.

Dimensions per element

Ø 37 x H 60 cm

Ø 56 x H 92 cm



SOFT LINE

Spindel / Design: Willy Guhl



## SOFTLINE | **SUMO**

Sumo is striking. And wildly expressive. The voluptuous shape fosters curves that delight the eye. The design is from Sternform.

---

Dimensions per element

Ø 35 x H 40 cm

Ø 45 x H 50 cm

---

SOFT LINE



SOFT LINE



## SOFTLINE | **SUSHI**

The Sushi plant trays guide the eyes of the viewer to a very special floral magic, which lends the robust container even greater animation.

---

Dimensions per element

Ø 50 x H 50 cm

Ø 65 x H 65 cm

---





Tokyo / Design: Michel Bruggmann



## SOFTLINE | TRENTA-3

1, 2, 30... one never has enough of Trenta-3. Timeless, classic with a perfect layer structure and protection against the cold for lasting floral splendour.

---

Dimensions per element

---

33 x 33 x H 66 cm

---

SOFT LINE

SOFT LINE



## SOFTLINE | TOKYO

Individual. Convincing. The design shows how low plant containers can make a very special impression. Available in special shapes.

---

Dimensions per element

---

44 x 44 x H 45 cm

53 x 53 x H 55 cm

70 x 70 x H 40 cm

---



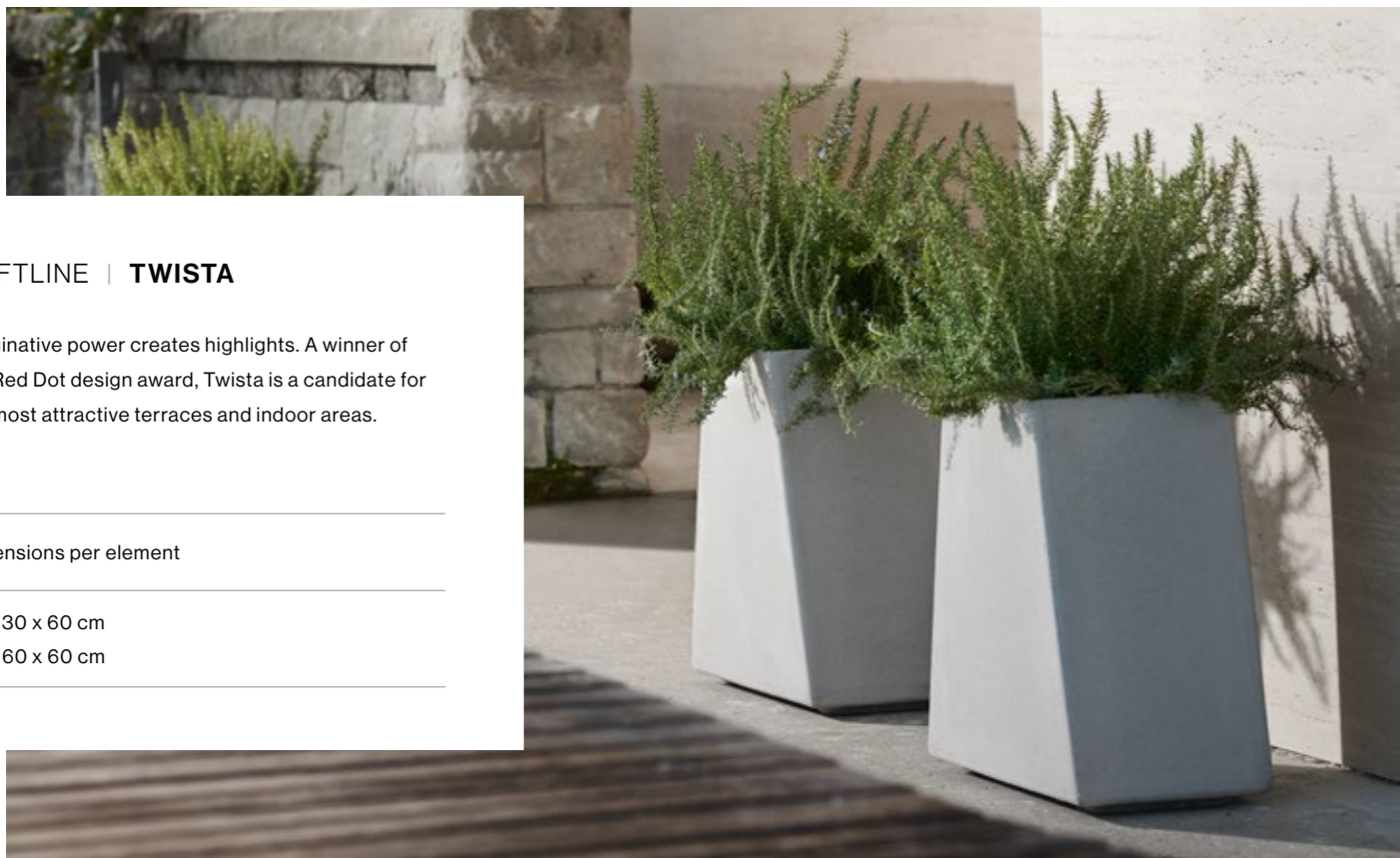
## SOFTLINE | TWISTA

Imaginative power creates highlights. A winner of the Red Dot design award, Twista is a candidate for the most attractive terraces and indoor areas.

Dimensions per element

60 x 30 x 60 cm

60 x 60 x 60 cm



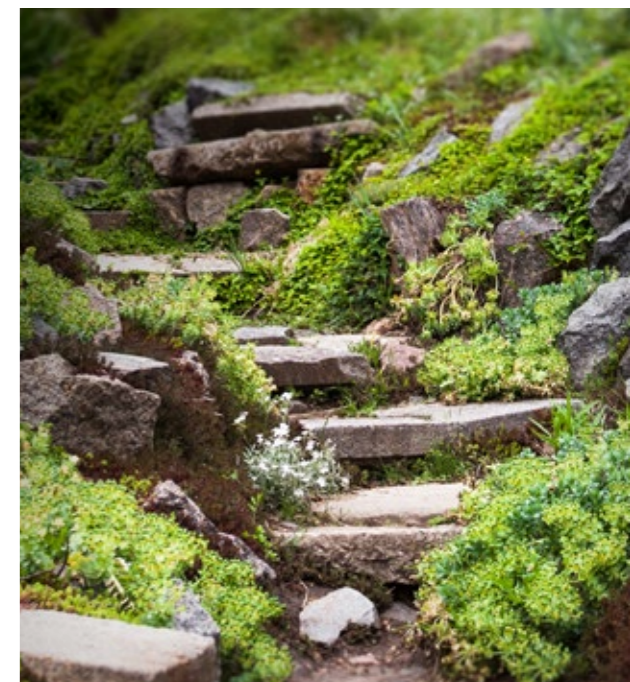
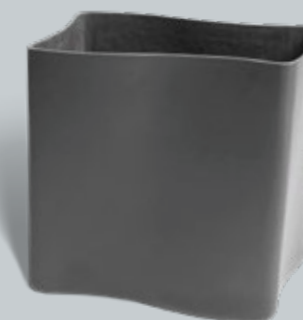
Wave / Design: Fries & Zumbühl

## SOFTLINE | WAVE

An intuitive sense of a wave represented the primary aim the designers. The wave as a hallmark for growth and a love of nature.

Dimensions per element

57 x 34 x H 57 cm



# URBAN GARDENING

Contentment is a quiet garden in which one can find rest.

URBAN GARDENING

## Urban Gardening. For those that love nature.

Humans and nature belong together. Therefore, since time immemorial planting and gardening have raised our spirits. Sprouting shoots and growth, and the feeling of wellbeing emanating from being surrounded by splendid flowers, are food for the senses and open up our inner self to fragrances, emotions and understanding.

URBAN GARDENING



## URBAN GARDENING | **BALCONIA**

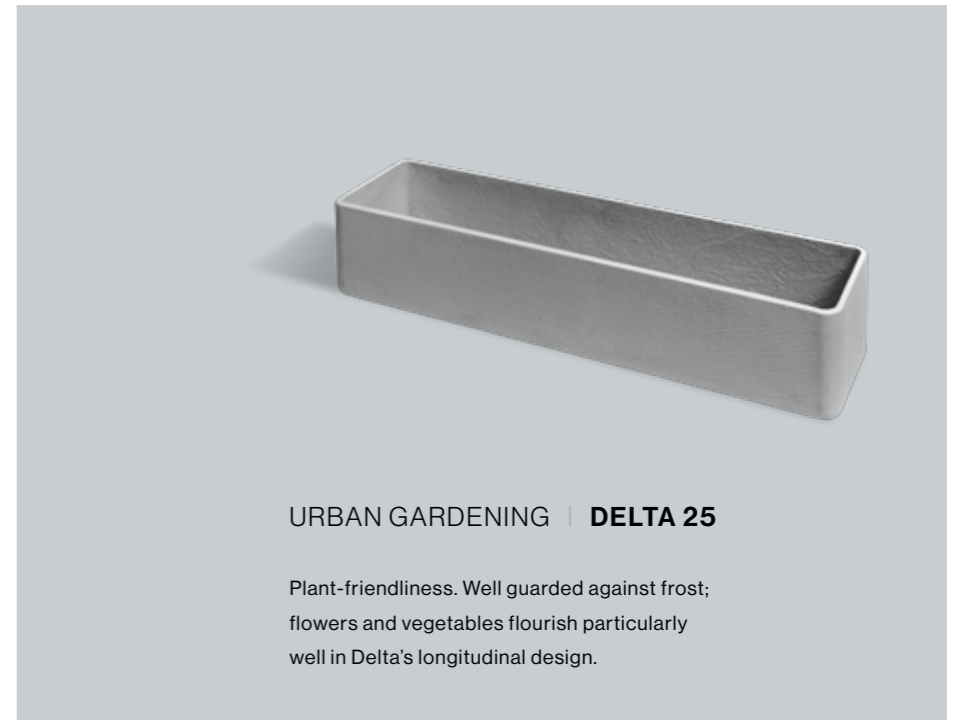
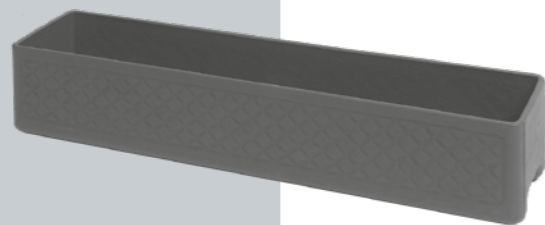
Enduring elegance. Beauty that never changes, withstands frost and gives flowers and herbs a new home. You will never wish to be without Balconia.

### Dimensions per element

40 x 17 x 17 cm	<b>BALCONIA</b>
60 x 17 x 17 cm	
80 x 17 x 17 cm	
100 x 17 x 17 cm	

40 x 17 x 17 cm	<b>BALCONIA DECOR</b>
60 x 17 x 17 cm	
80 x 17 x 17 cm	
100 x 17 x 17 cm	

60 x 17 x 20 cm	<b>BALCONIA RÉSERVOIR</b>
-----------------	---------------------------



## URBAN GARDENING | **DELTA 25**

Plant-friendliness. Well guarded against frost; flowers and vegetables flourish particularly well in Delta's longitudinal design.

### Dimensions per element

80 x 25 x 25 cm
100 x 25 x 25 cm



URBAN GARDENING |

**ONDAGREEN**

Ondagreen is the new raised bed of the Swisspearl garden collection and consists of the proven and classic Swisspearl corrugated sheet. This material is particularly durable, sustainable and weather-resistant, and gives the bed the necessary stability.

Dimensions per element

171 x 86 x 80 cm  
258 x 120 x 80 cm



URBAN GARDENING |

**DAS HOCHBEET**

Aesthetics on wheels. The raised-bed is quite simply a part of the modern gardener's repertoire. Because the art of gardening enhances our surroundings and everything edible is a delight to the palate.

Dimensions per element

110 x 65 x H 89 cm





# CUSTOM LINE

Where the eye meets  
nature, there begins  
a highly imaginative  
journey to the  
innermost self.

CUSTOMLINE

## **Custom Line. Flexible. Tailor-made.**

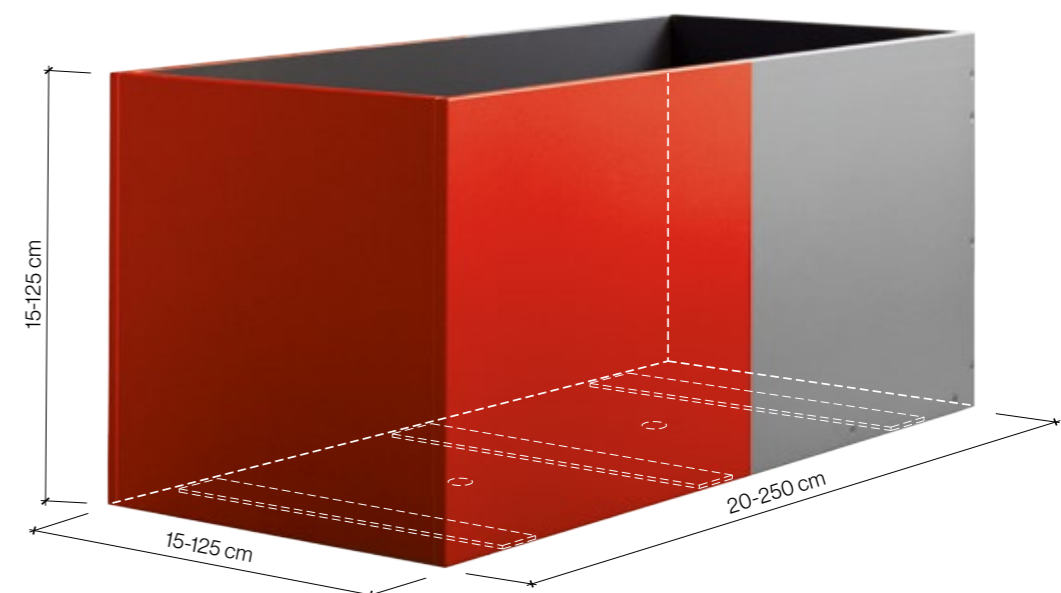
For singular spatial conditions and new ideas. Appropriate and individual garden design brings our surroundings to full bloom. Design employing the Swisspearl Custom Line means perfectly dimensioned plant containers with lengths of up to 250 cm. The containers are specially designed and manufactured according to personal requests.

CUSTOMLINE



## Design freedom. Custom-made.

Panels are used to create both large and small plant containers that serve as privacy screens, room dividers, garden or terrace decoration, and offer an invitation to enjoy the comforts of home. The impermeable inner coating and frost protection ensure long-term pleasure with both plants and the container. Moreover, the design can include sharp edges, rounded corners, bonding, or invisible screws just as one pleases.



# CUSTOM LINE INSTRUCTIONS

## Positioning:

Planters must always be transported to the installation site on pallets if a crane is to be used to position them. A suitable hoist must also be used for this.

## Installation site:

„Custom Line“ planters must be set up at their installation site on a level, non-yielding surface and they must stand on all of their feet.

We recommend that you always have a visible 2 cm gap inbetween the planters.

The planters are not stackable and they must be unpacked if they are going to be stored outdoors.

## Planting:

The planters are intended solely for planting and they are not to be used as seats or for any other non-intended purpose.

## Feet:

All “Custom Line” planters have feet fitted to them.

## Screw connection:

The screw connection is visible in natural grey „Custom Line“ planters.

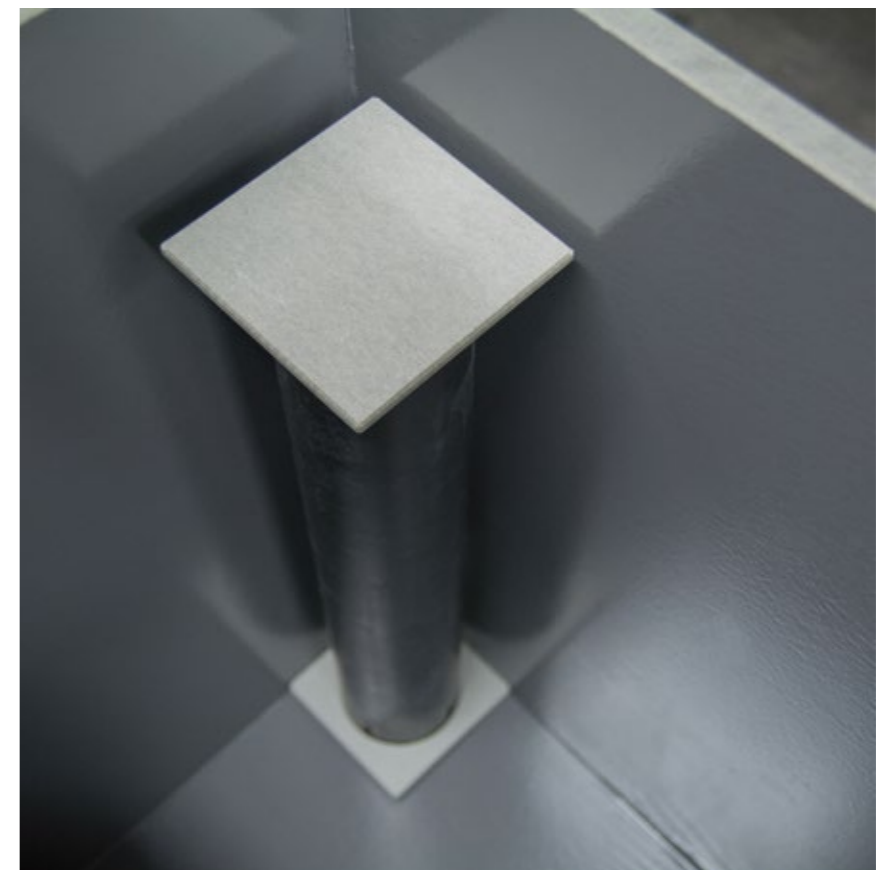
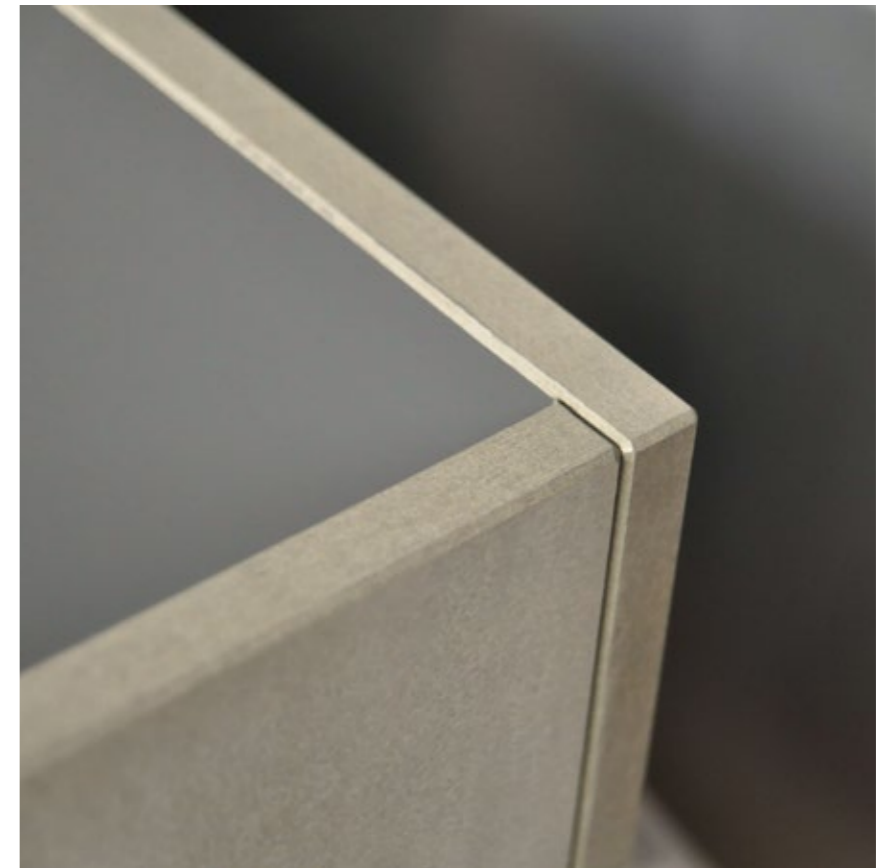
## Watertightness:

The slabs used in our “Custom Line” planters have been treated and they are watertight.

A pond liner must also be inserted on-site in order to achieve absolute watertightness.

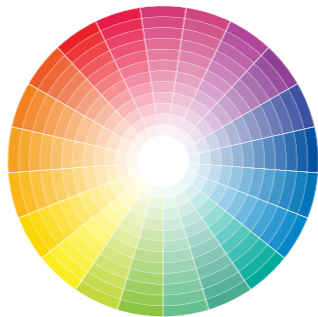
Design of the first water.

Water control and outflow take place via integrated base perforations. An optional water reservoir is also no problem and provides the watering of bushes and flowers with ideal support.





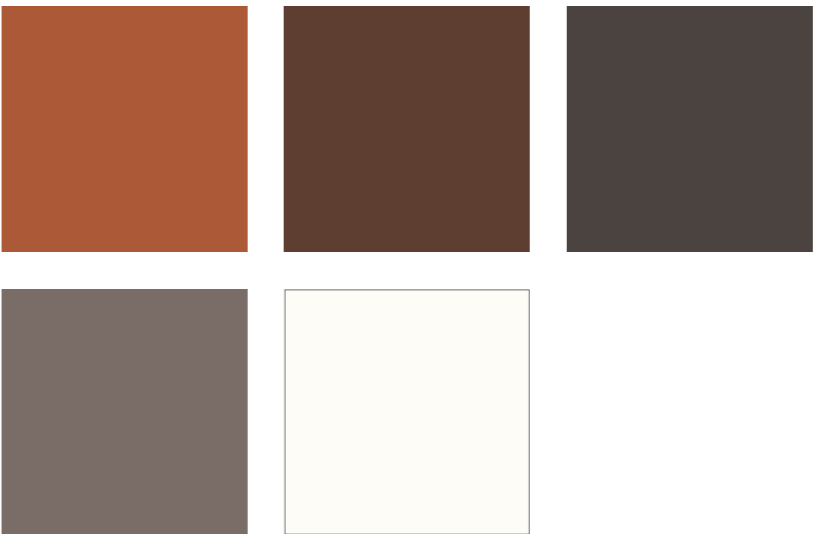
# CUSTOM COLOR



Colourful splendour in combination with grey, or green leaves with red. Select your chosen design from the special Swisspearl color range, or an extensive palette of the most attractive RAL and NCS shades, which are available for virtually all Swisspearl plant containers.

# EXPRESSION COLOR

Subtle earth tones: Five expressive, unobtrusive colors that integrate well into the surroundings and show off any plant to its best advantage. The matt glaze highlights the rough haptics of the natural fiber cement particularly well.



CUSTOM LINE



CUSTOM LINE | **65 AND 75**

The optimal cut with minimal resource consumption. The sustainable solution in elegant anthracite 7016, now in stock.

---

Dimensions per element

---

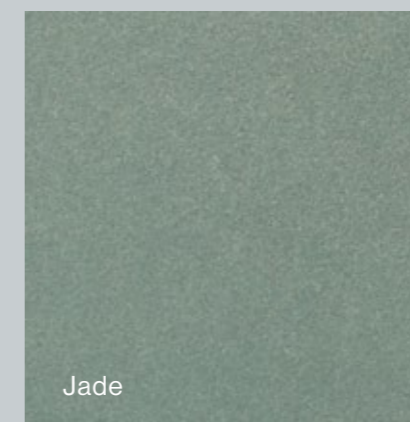
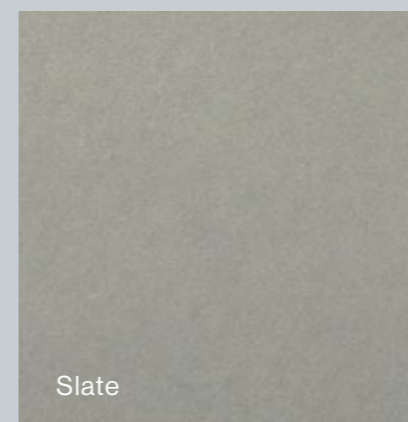
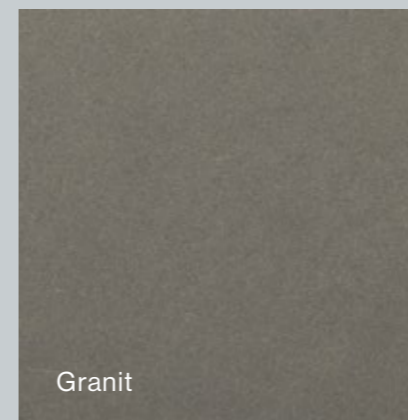
115 x 55 x 65 cm	<b>CUSTOM LINE 65</b>
100 x 55 x 75 cm	<b>CUSTOM LINE 75</b>

---

CUSTOM COLOR

# THE NEW COLORS- NATURAL COLOR

Three soft, non-opaque colours give a particularly fine appearance to the fibre cement structure. The granite, jade and slate pastel shades look fresh and modern and they make a subtle statement that won't steal the show from the plants.





# THE MATERIAL

From nature for nature.  
The ideal material  
for green oases.

## Swisspearl. Durability and longevity in every fibre.

The original. Entirely recyclable and made from a special blend of cement, cellulose, fibres, air and water that defines fibre cement. A highly resilient material with cornerstones formed by a pronounced innovative spirit and natural, regional raw materials, which in unison, create trendsetting architecture.

# GARDENING TIPS

## Watering.

Fibre cement is a breathable product that regulates moisture levels automatically. All the containers possess base outflow perforations, which in order to allow water to flow freely and prevent freezing in winter should not be blocked. Clay fragments are a proven and simple help in this regard, and need merely to be placed over the outflow apertures. Some large containers are also fitted with a water reservoir and overflow, which reduce watering frequency considerably.

## Perfect layering.

In order to prevent waterlogging, first fill one-third of the container with expanded clay, or coarse river gravel. Then add a water-permeable nonwoven mat on which the plants are subsequently placed. Finally, fill the container with earth. Keep a roughly 5 cm rim free in order to avoid overflows when watering.

## The ideal location.

Select a suitable location for each plant with the correct light and temperature conditions and stand the container on an even surface. Ideally, indoor plant containers should be placed on a underlay or plate to prevent damage to the flooring.

## Repotting.

Plants need fresh earth every couple of years and ideally repotting should take place in spring. Take the plant with its roots out of the container, remove the old soil and refill with fresh earth.

## Frost protection.

The high end volume of the containers safeguards the roots of the plants against frost. Should you wish to additionally protect the containers in winter, use a nonwoven fabric or natural material, but never plastic, as this can lead to the formation of permanent white discolourations.

Flowers are the beautiful words and  
hieroglyphics of nature, with which  
she indicates how much she loves us.

Johann Wolfgang von Goethe



Aladin / Design: Patrick Schöni

# PRODUCTION

PRODUCTION

Manufactured by hand. The wet fibre cement is moulded into shape. Then following drying, resource-protective processes are used to create frost-proof objects, each of which is unique. Indeed, every Swisspearl product delivers an exemplary environmental balance, lasts for generations and provides a reminder of the inventive spirit of the original.

